

# Apartment Floor Plans

# Building the spirit of a community *the new heart of Muscat*

OBM International, the acclaimed architectural firm that specialise in residential and resort masterplans, have designed the apartments and surrounding Marina Village. Their experience of resort, residential and oceanic development will deliver a standard of quality throughout the development that is unprecedented in Oman.



## Contents

Introduction

Page 01

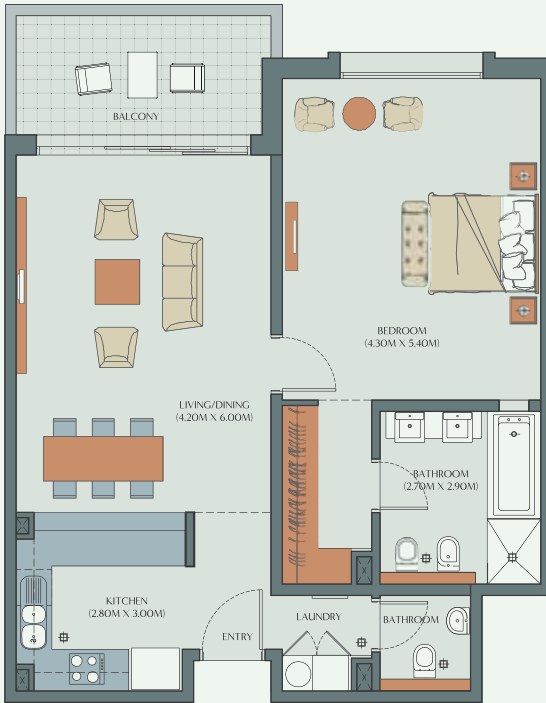
Floor Plans

Page 19

Schedule of payments



The Wave, Muscat is an International Award Winning Development



## Floor Plan Apartment Type 1-A

Net A/C area 81.50 sq.mt.  
Balconies 9.60 sq.mt.  
Total Area 91.10 sq.mt.

Floorplans are for illustrative purposes only.



## Floor Plan Apartment Type 1-E

Net A/C area 91.50 sq.mt.  
Balconies 10.90 sq.mt.  
Total Area 102.40 sq.mt.

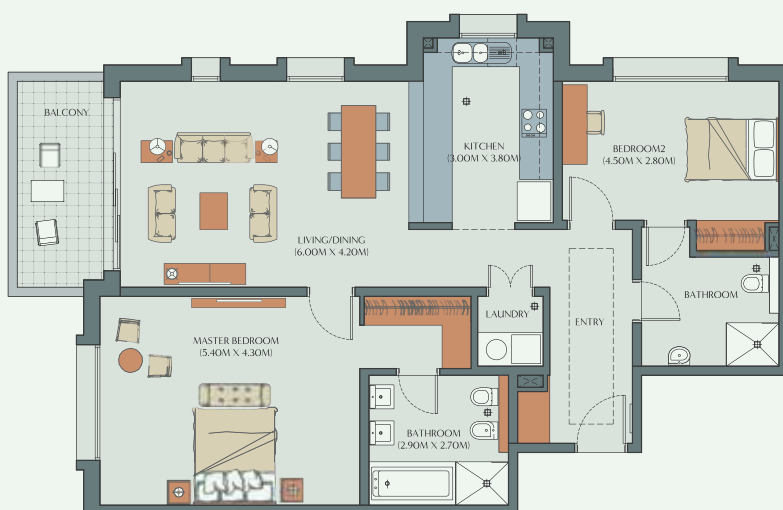
Floorplans are for illustrative purposes only.



## Floor Plan Apartment Type 2-A

Net A/C area 119.00 sq.mt.  
Balconies 12.20 sq.mt.  
Total Area 131.20 sq.mt.

Floorplans are for illustrative purposes only.



## Floor Plan Apartment Type 2-A1

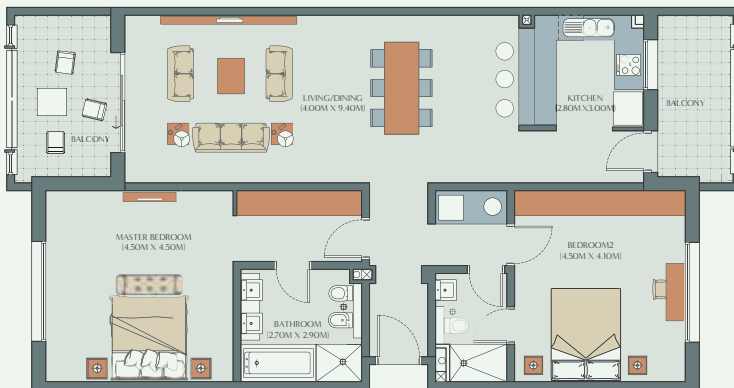
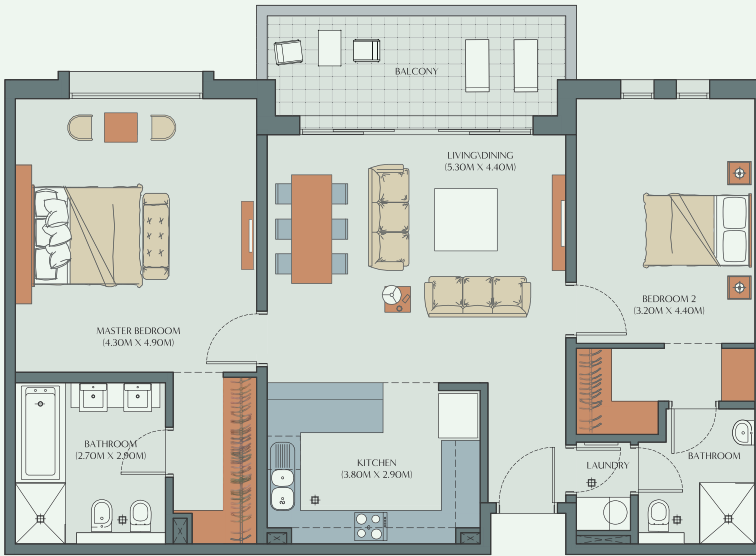
Net A/C area 112.70 sq.mt.  
Balconies 8.80 sq.mt.  
Total Area 121.50 sq.mt.

Floorplans are for illustrative purposes only.

## Floor Plan Apartment Type 2-B

Net A/C area 101.60 sq.mt.  
Balconies 10.90 sq.mt.  
Total Area 112.50 sq.mt.

Floorplans are for illustrative purposes only.



## Floor Plan Apartment Type 2-F

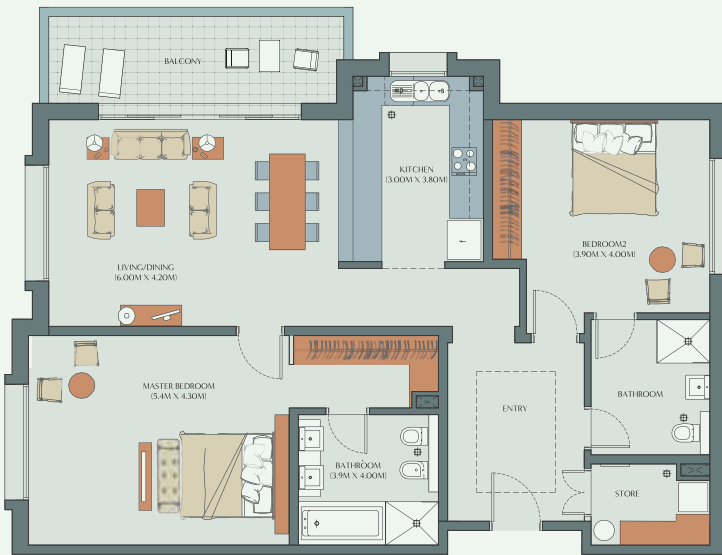
Net A/C area 122.10 sq.mt.  
Balconies 17.20 sq.mt.  
Total Area 139.30 sq.mt.

Floorplans are for illustrative purposes only.

## Floor Plan Apartment Type 2-J

Net A/C area 123.20 sq.mt.  
Balconies 12.20 sq.mt.  
Total Area 135.40 sq.mt.

Floorplans are for illustrative purposes only.



## Floor Plan Apartment Type 2-J1

Net A/C area 123.20 sq.mt.  
Balconies 12.20 sq.mt.  
Total Area 135.40 sq.mt.

Floorplans are for illustrative purposes only.

## Floor Plan Apartment Type 3-C

Net A/C area 165.50 sq.mt.  
Balconies 36.50 sq.mt.  
Total Area 202.00 sq.mt.

Floorplans are for illustrative purposes only.



## Floor Plan Apartment Type 3-C1

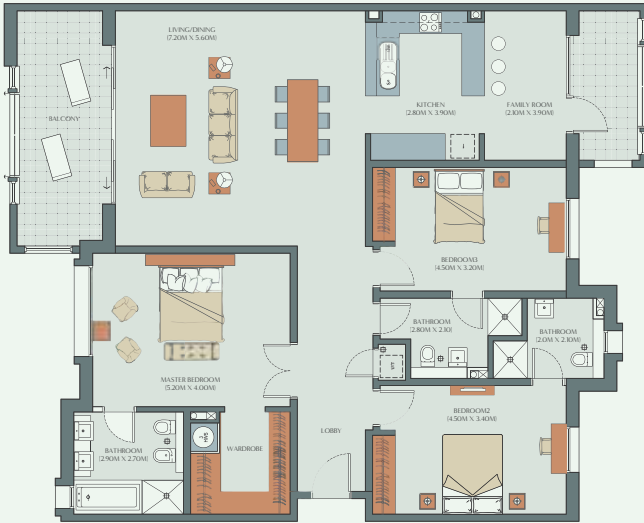
Net A/C area 164.90 sq.mt.  
Balconies 35.10 sq.mt.  
Total Area 200.00 sq.mt.

Floorplans are for illustrative purposes only.

## Floor Plan Apartment Type 3-C2

Net A/C area 164.90 sq.mt.  
Balconies 22.60 sq.mt.  
Total Area 187.50 sq.mt.

Floorplans are for illustrative purposes only.



Lower Floor



Upper Floor

## Floor Plan Apartment Type 3-D

Net A/C area 176.70 sq.mt.  
Balconies 14.30 sq.mt.  
Void 16.90 sq.mt.  
Total Area 207.90 sq.mt.

Floorplans are for illustrative purposes only.





Upper Floor



Lower Floor

## Floor Plan Apartment Type 3-E

Net A/C area	158.50 sq.mt.
Balconies	16.80 sq.mt.
Void	14.40 sq.mt.
Total Area	189.70 sq.mt.

Floorplans are for illustrative purposes only.



## Floor Plan Apartment Type 3-G

Net A/C area	190.30 sq.mt.
Balconies	40.00 sq.mt.
Total Area	230.30 sq.mt.

Floorplans are for illustrative purposes only.



## Floor Plan *Apartment Type 4-C*

Net A/C area 220.70 sq.mt.  
Balconies 38.00 sq.mt.  
Total Area 258.70 sq.mt.

Floorplans are for illustrative purposes only.



## Floor Plan *Apartment Type 4-C2*

Net A/C area 220.80 sq.mt.  
Balconies 24.10 sq.mt.  
Total Area 244.90 sq.mt.

Floorplans are for illustrative purposes only.



## Floor Plan Apartment Type 4-D

Net A/C area 218.60 sq.mt.  
Balconies 38.20 sq.mt.  
Total Area 256.80 sq.mt.

Floorplans are for illustrative purposes only.



## Floor Plan Apartment Type 4-E

Net A/C area 241.30 sq.mt.  
Balconies 42.20 sq.mt.  
Total Area 283.50 sq.mt.

Floorplans are for illustrative purposes only.

## Schedule of payments

No.	Amount of Payment	Milestone events for Indicative Scheduled Date	Indicative Scheduled Date
1.	Ten (10%) of price	On or before the signing of this agreement	Signing of agreement
2.	Thirty (30) percent of price	Completion of ground floor slab of the building that the apartment is located within	Construction start date (CSD) (to be advised by developer plus six (6) months)
3.	Fifteen (15) percent of price	Completion of the roof slab of the building that the apartment is located within	CSD plus twelve (12) months
4.	Thirty (30) percent of price, plus extras and full	On completion of render within the apartment	CSD plus eighteen (18) months
5.	Fifteen (15) percent of price	Completion date of the apartment	CSD plus twenty four (24) months

## Definitions of payments

Completion of ground floor slab

≈ means the completion of the construction of the ground floor slab of the building as agreed by the developer and certified by the project manager

Completion of roof slab

≈ means the completion of the construction of the roof slab of the building as agreed by the developer and certified by the project manager

Completion of render

≈ means the walls rendered with sand and cement, prior to putty coat

Completion date

≈ see clause 1 – definitions and interpretation of the contract conditions for definition of "Completion date"

### Disclaimer and Limitation of Liability

All information, features, dimensions, drawings, graphic materials, pictures, conceptual renderings, plans and specifications contained in this Brochure (the "Brochure Contents") are for illustrative purposes only. The accuracy of the Brochure Contents are not warranted as being true and accurate and are subject to change without notice by The Wave, Muscat SAOC (the "Developer").

The Developer, its subsidiaries, affiliates, contractors, agents, employees, licensees, and/or assigns are in no way responsible or liable for any damages whether they be direct, indirect, punitive, special, consequential, contribution or indemnity of any kind whatsoever, however caused, arising out of the use or reliance upon the Brochure and the Brochure Contents.

The Brochure and the Brochure Contents are copyrighted works owned by the Developer. All rights reserved. Unauthorized reproduction, display or other dissemination of such materials is strictly prohibited and constitutes copyright infringement.